



Gift Tags



What you'll need:

- Scissors
- Glue
- Permanent Marker

What's included:

- Plastic Mesh Canvas
- Paper Clip
- Ribbon
- Sequins
- Yarn
- Cardstock

Instructions:

1. Position your canvas with a short side facing you.

2. Trim the canvas into shape. Make the marks shown in the picture.

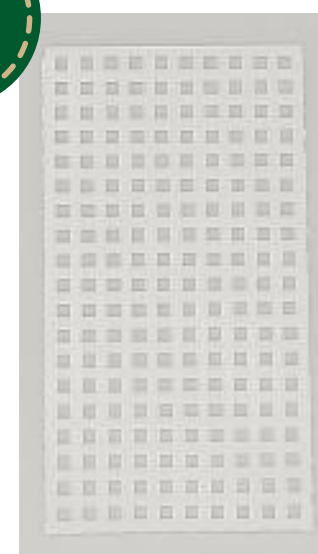
Then use scissors to cut the canvas diagonally between the two marks, Repeat with the other side

3. Trace the plastic canvas onto the cardstock. Set aside.

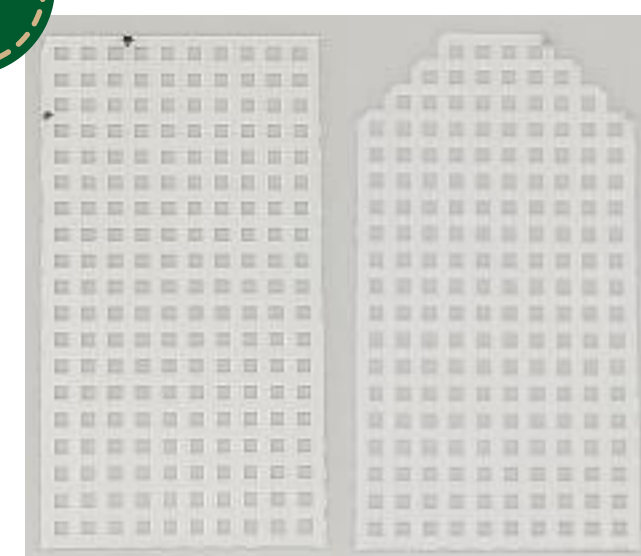
4. Straighten the paper clip. Bend one end over itself, forming a small loop, like the eye of a needle. Tie your yarn to eye of the paper clip needle.

5. 'Catch' the tail of your yarn. Hold the tail against the canvas until your next stitches have secured it. Overstitch the edge of the canvas.

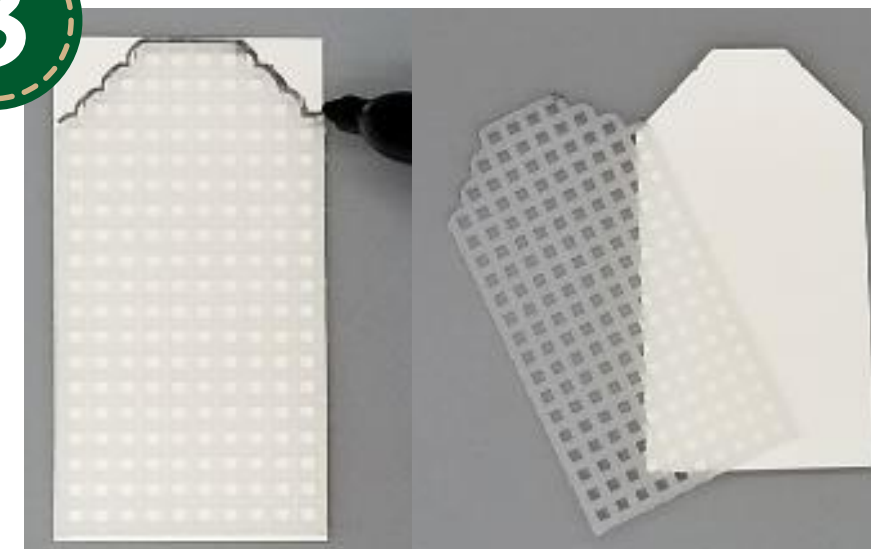
1



2



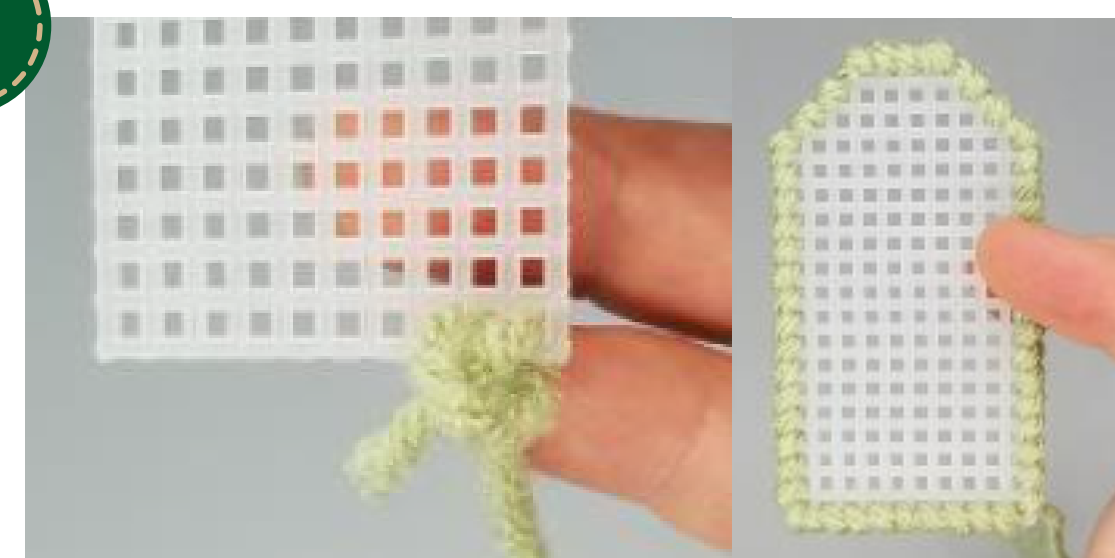
3



4



5



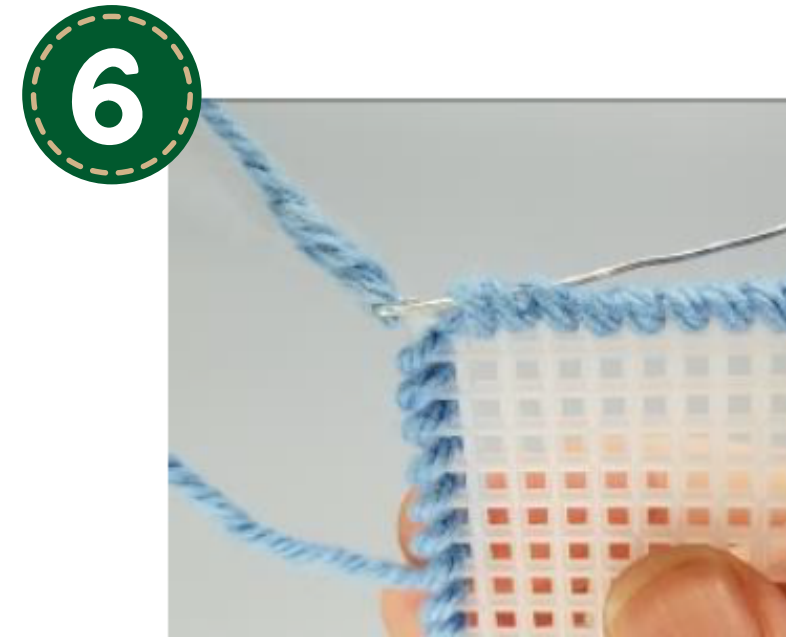


Gift Tags

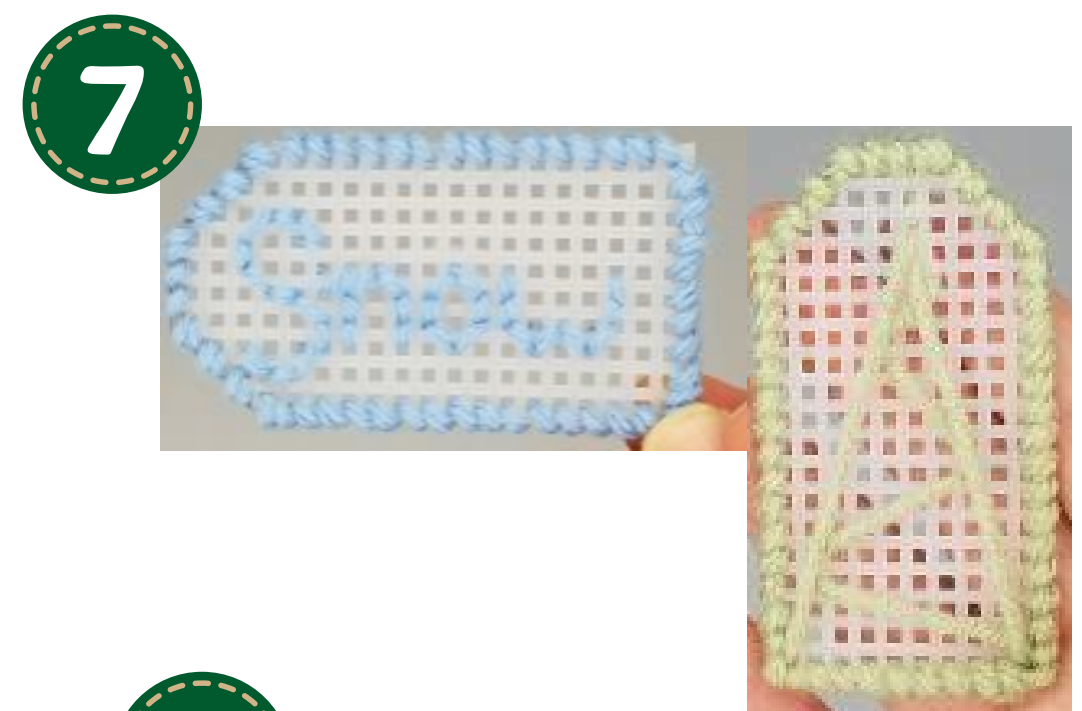


Instructions:

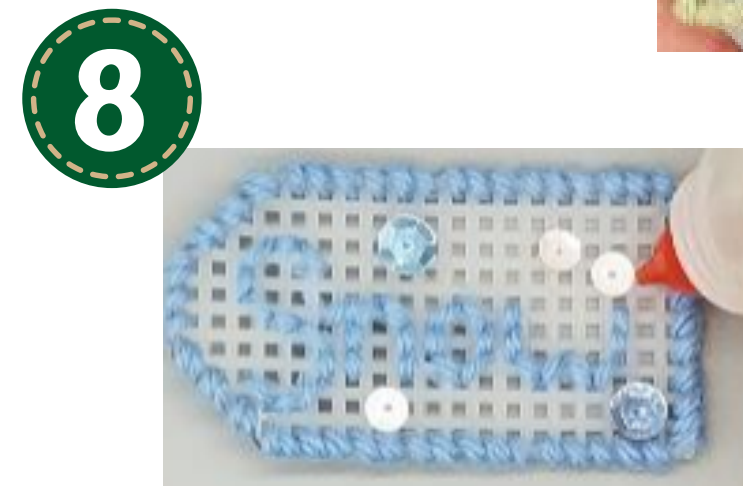
6. End the thread you are working with. To do this, pass the needle through the back of your stitches. Cut away the remaining yarn.



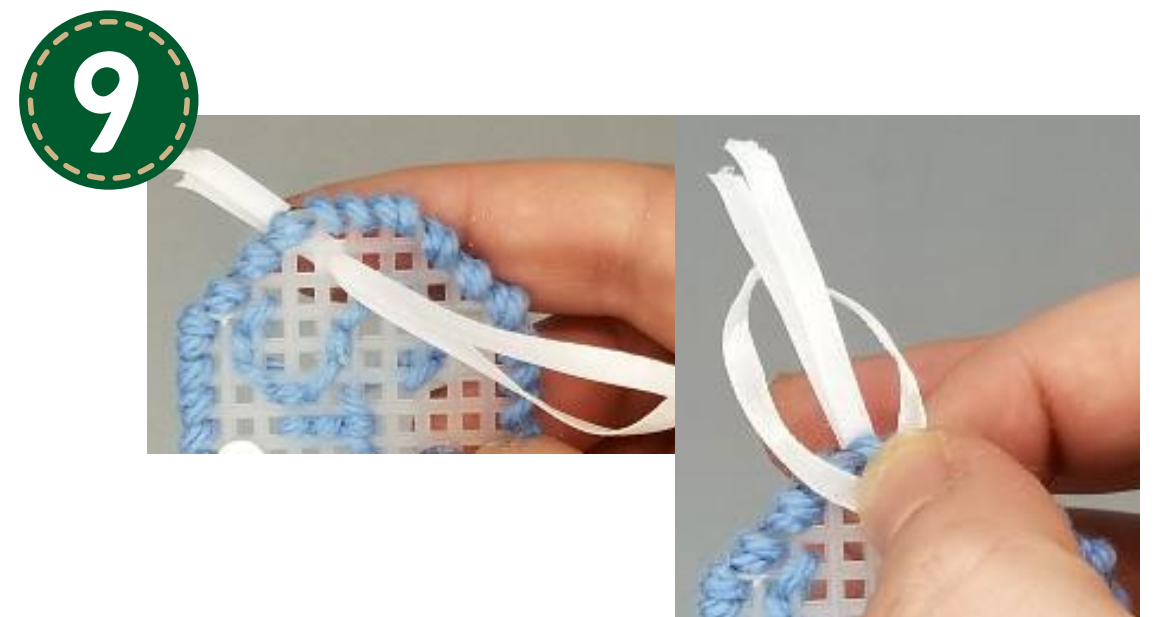
7. Add a design to your gift tag.
-See separate instructions for “Snow” and “Tree” designs.



8. Add sequins to your design.



9. Fold the ribbon in half. Thread the folded ribbon through a hole at the top of the gift tag. Pass the loose ends through the loop. Pull tight.



10. Affix cardstock to the back of the gift tag using glue on the edges.



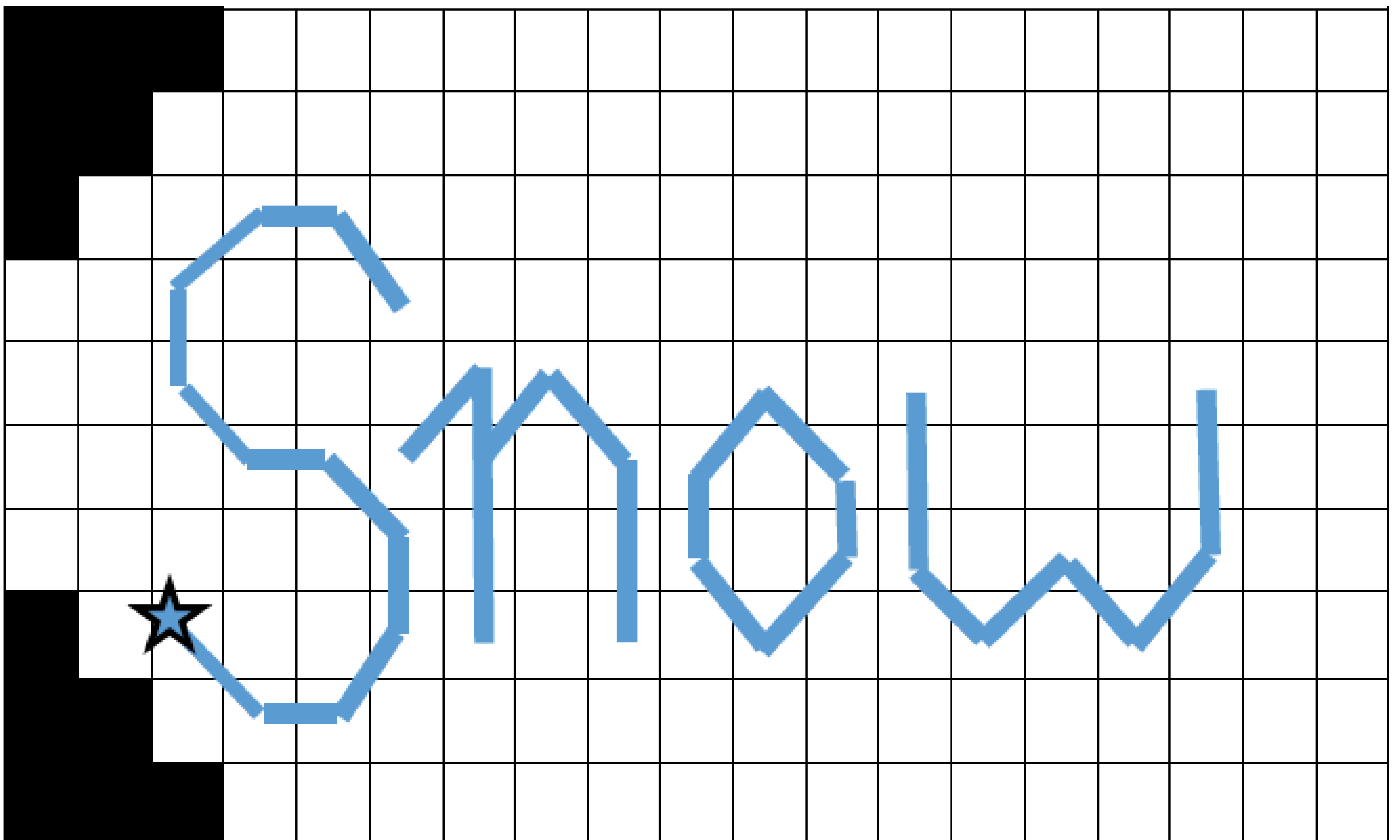


Gift Tags



“Snow” Instructions:

1. Position your needle at the star in Pattern 1, on the bottom side of the canvas. Push your needle through the top of the plastic canvas. ‘Catch’ the tail of your yarn.
2. Continue stitching per the pattern below. Take care not to skip around — traveling with the yarn will result in lines visible from the front of the pattern.
3. When finished, end this thread. Pass the needle through the back of your stitches. Cut away the remaining yarn.





Gift Tags



“Tree” Instructions:

1. Tie a knot in the end of the yarn. Position your needle at the star in Pattern 2, on the bottom side of the canvas. Push your needle through the top of the plastic canvas.
2. Follow the arrows per the pattern below, starting with the blue arrow. Dashed lines represent traveling on the bottom of the canvas.
3. When finished, end this thread. Pass the needle through the back of your stitches. Cut away remaining yarn.

